

# JBC 全日本新人選手権



<b>Oil Pattern Distance:</b> 42 Feet	<b>Reverse Brush Drop:</b> 30 Feet	<b>Oil Per Board:</b> 50 uL
<b>Forward Oil Total:</b> 15.35 mL	<b>Reverse Oil Total:</b> 10.75 mL	<b>Volume Oil Total:</b> 26.1 mL
<b>Forward Boards Crossed:</b> 307 Boards	<b>Reverse Boards Crossed:</b> 215 Boards	<b>Total Boards Crossed:</b> 522 Boards

	Start	Stop	Loads	Speed	Crossed	Start	End	Feet	T.Oil
1	3L	3R	3	14	105	0.0	3.9	3.9	5250
2	7L	7R	2	18	54	3.9	9.0	5.1	2700
3	9L	9R	2	18	46	9.0	14.1	5.1	2300
4	10L	10R	2	18	42	14.1	19.2	5.1	2100
5	13L	13R	2	22	30	19.2	25.4	6.2	1500
6	13L	13R	1	22	15	25.4	28.5	3.1	750
7	13L	13R	1	26	15	28.5	32.1	3.6	750
8	2L	2R	0	30	0	32.1	42.0	9.9	0

Navigation: Forward Reverse More

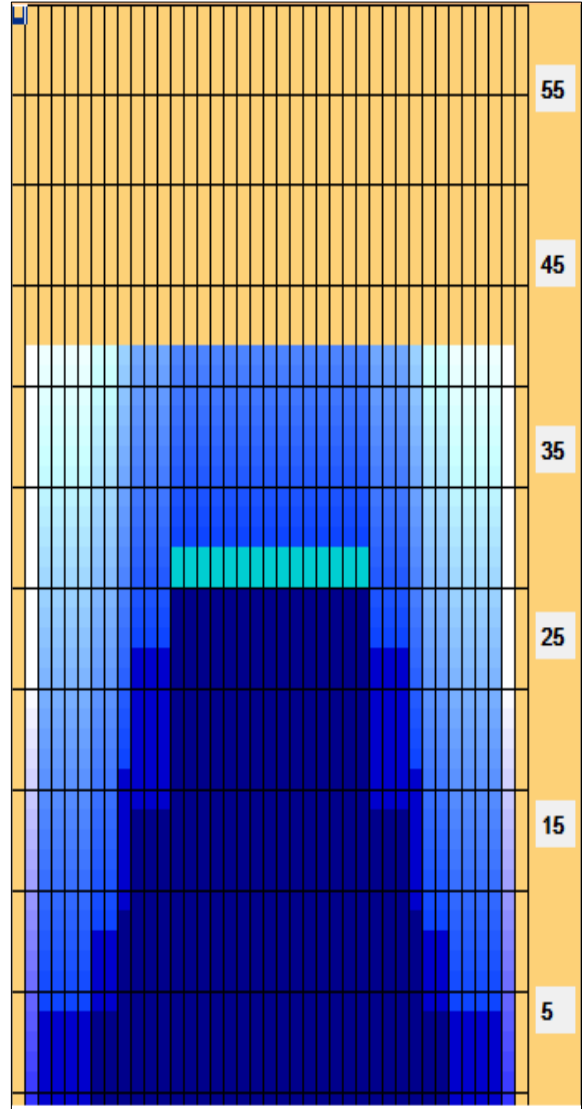
	Start	Stop	Loads	Speed	Crossed	Start	End	Feet	T.Oil
1	2L	2R	0	30	0	42.0	30.0	-12.0	0
2	13L	13R	1	22	15	30.0	26.9	-3.1	750
3	10L	10R	2	22	42	26.9	20.7	-6.2	2100
4	9L	9R	1	18	23	20.7	18.2	-2.5	1150
5	9L	9R	2	18	46	18.2	13.1	-5.1	2300
6	7L	7R	1	18	27	13.1	10.6	-2.5	1350
7	7L	7R	1	14	27	10.6	8.7	-1.9	1350
8	3L	3R	1	14	35	8.7	6.8	-1.9	1750
9	2L	2R	0	14	0	6.8	0.0	-6.8	0

Navigation: Forward Reverse More

Conditioner:  
Type In or Select One

TransferType:  
Type In or Select One

- Forward
- Reverse
- Combined
- Buff



Item	3L-7L:18L-18R	8L-12L:18L-18R	13L-17L:18L-18R	18L-18R:17R-13R	18L-18R:12R-8R	18L-18R:7R-3R
Description	Outside Track:Middle	Middle Track:Middle	Inside Track:Middle	Middle: Inside Track	Middle:Middle Track	Middle:Outside Track
Track Zone Ratio	4.58	1.53	1	1	1.53	4.58

